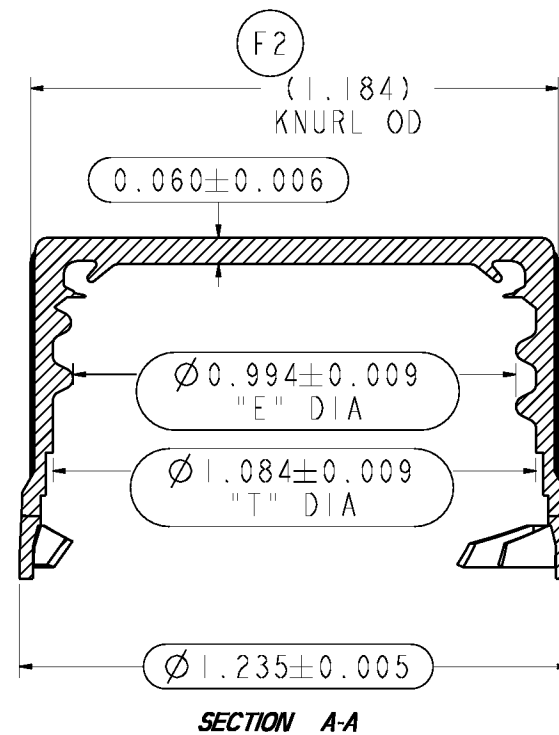
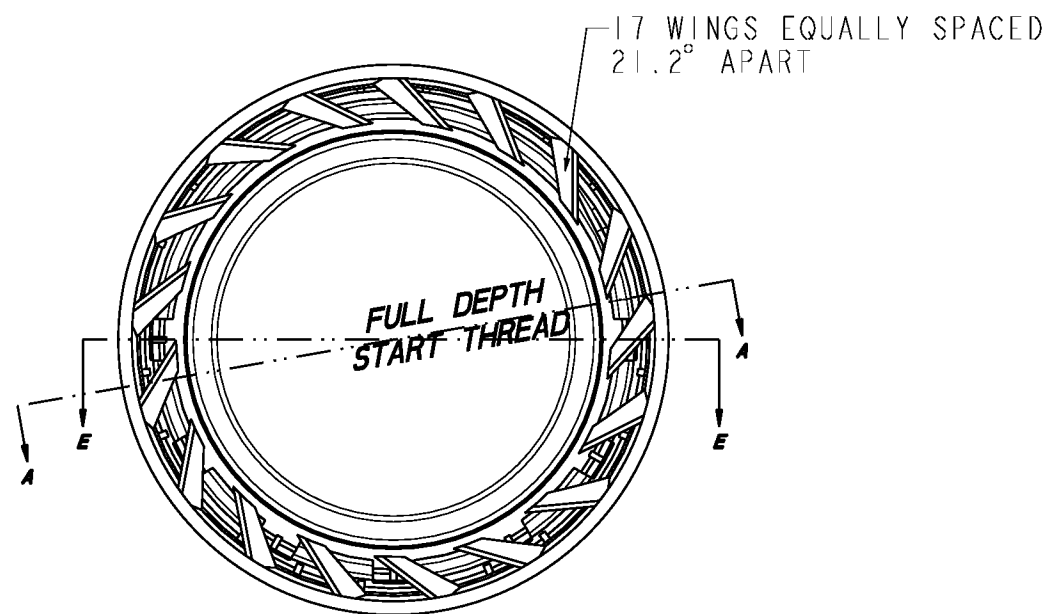
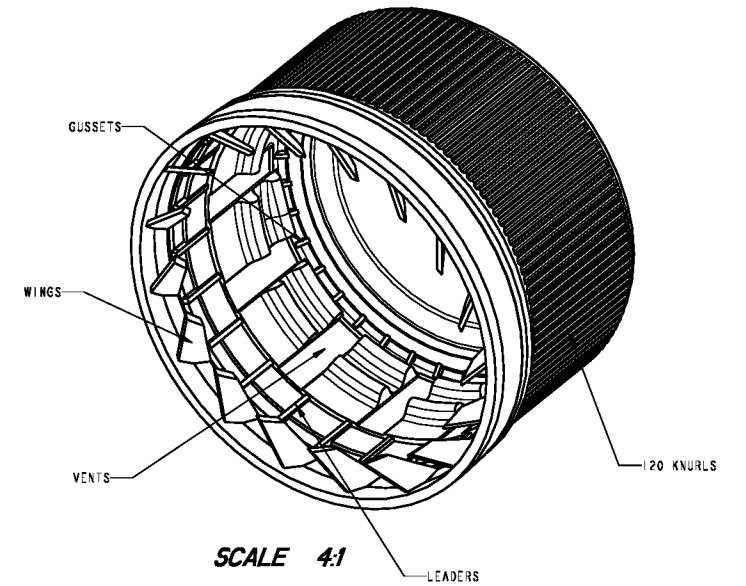


SECTION E-E



SECTION A-A



1. THREAD INFORMATION:
- 8 THREADS PER INCH HELIX ANGLE 2° 12'
 - FULL DEPTH THREAD TO BE GENERATED 350° ± 20°
 - THREAD RUNOUT IS TO BE 27° ± 2° AND GRADUAL FROM FULL DEPTH THREAD AT OPEN END OF CLOSURE.

GENERAL TOLERANCES		ALCOA CLOSURE SYSTEMS INTERNATIONAL, INC. Crawfordsville, IN USA		E		CHANGED TEXT SIZE		05/54		DMP	
X.XXXX	±X.XXXX	F2	ADDED DIMENSIONAL INFORMATION	12/52	KSE	THIS DRAWING AND ALL DIMENSIONS CONTAINED HEREIN ARE THE PROPERTY OF ALCOA CLOSURE SYSTEMS INTERNATIONAL, INC. AND SHALL NOT BE REPRODUCED OR TRANSMITTED IN ANY FORM OR BY ANY MEANS, ELECTRONIC OR MECHANICAL, INCLUDING PHOTOCOPYING, RECORDING, OR BY ANY INFORMATION STORAGE AND RETRIEVAL SYSTEM, WITHOUT THE WRITTEN PERMISSION OF ALCOA CLOSURE SYSTEMS INTERNATIONAL, INC. 2000 ALCOA DRIVE, CRAWFORDSVILLE, IN 47520 USA					
X.XXX	±X.XXX	F1	ADDED DIMENSIONAL INFORMATION	12/52	KSE						
X.XX	±X.XX	E	RELEASED IN PRO-E	02/52	KSE						
X.X	±X.X	A	RELEASED FOR MFG	08/92	HVM						
X	±X										
ALL ANGLES ± X.XX°		MATERIAL FINISHED TO		DESIGNER		CHECKED BY		APPROVED BY		SHEET NUMBER	
BREAK ALL SHARP EDGES X.XXX		PLASTIC		HVM		SCALE		DATE		PART NUMBER	
						5:1		08/15/97		213567	
								D		CURRENT REVISION	
										g	